



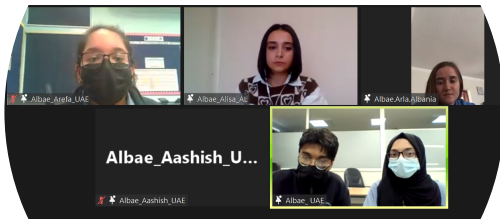
# DigiEduHack Solution

## Brussels - STEM EduHack - J&J Product of the Future

### Challenge: Brussels - STEM EduHack - J&J Product of the Future Challenge 2021

## Albae

### "Diagnostics & Predictions Mirror"



"Diagnostics & Predictions Mirror", a full body size mirror that can calculate BMI, percentage of water in the body, pulse rate, blood pressure etc.

## Team: Albae

### Team members

Alisa Shima, Arla Carciu, Fabjan Kishta, Aaashish Badal, Arefa Zakir, Saba Khan, Emadul Islam

### Contact details

maryna@jaeurope.org

## Solution Details

### Solution description

The team came up with a "Diagnostics & Predictions Mirror", a full body size mirror that can calculate BMI, percentage of water in the body, pulse rate, blood pressure etc. The mirror also includes a virtual assistant and can be connected to various apps. Based on the analysis, the mirror can come up with a diagnosis and suggest actions to be taken to lead healthier lifestyle.

## **Solution context**

The challenge was to design a future consumer product taking into account sustainability, consumer experience, personalization and digitalization.

## **Solution target group**

All consumers

## **Solution impact**

Make the lives of people healthier.

## **Solution tweet text**

Want or need a healthier lifestyle? "Diagnostics & Predictions Mirror", a full body size mirror that can calculate BMI, percentage of water in the body, pulse rate, blood pressure etc. This is a solution for you!

## **Solution innovativeness**

Holistic measurements through the mirror which is built from sustainable materials. The idea is to change the beauty perceptions into healthy body ones and encourage positive self-esteem in people of all genders and ages.

## **Solution transferability**

The sports industry, beauty, health industry.

## **Solution sustainability**

The mirror is constructed from sustainable materials only.

## **Solution team work**

The team from Albania and UAE has worked together online to come up with this idea.